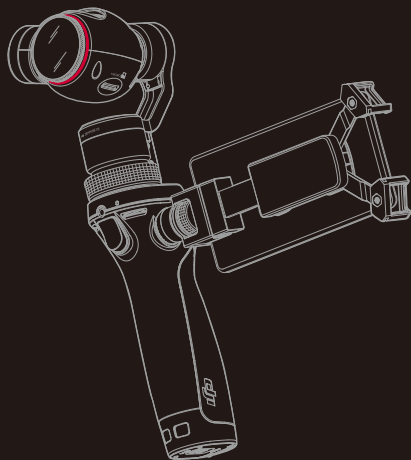


OSMO

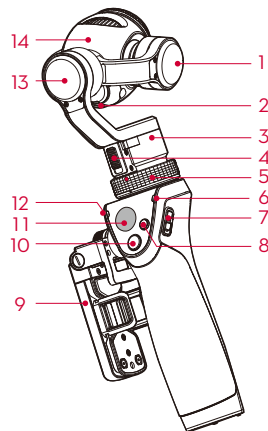
Quick Start Guide

V1.0

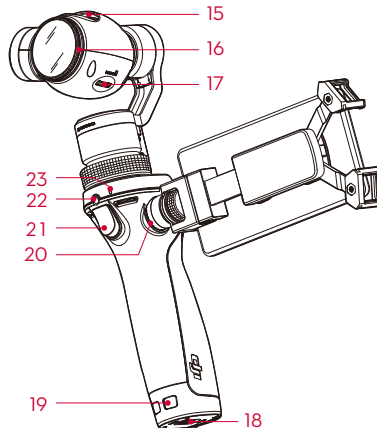


Overview

The Osmo is a professional handheld gimbal that combines mobility and stability in one device. Its camera shoots sharp 12MP still photos and stable video at up to 4K. Your mobile device can be mounted on the side of the handle and display a live feed through the high-speed WiFi video link.



- | | |
|------------------------|----------------------|
| 1 Tilt Motor | 10 Shutter Button |
| 2 Micro USB Port | 11 Joystick |
| 3 Pan Motor | 12 Camera Status LED |
| 4 Pan Axis Lock | 13 Roll Motor |
| 5 Gimbal Lock | 14 Camera |
| 6 System Status LED | |
| 7 Power Switch | |
| 8 Record Button | |
| 9 Mobile Device Holder | |



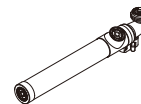
- | |
|------------------------------|
| 15 Air Vents |
| 16 UV Filter |
| 17 Micro SD Card Slot |
| 18 Battery Cover |
| 19 Lanyard Hole |
| 20 Rosette Mount |
| 21 Trigger |
| 22 External Microphone Input |
| 23 Built-in Microphone |

Specifications

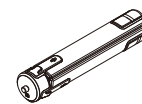
• Handle		
Dimensions	2.4×1.9×6.4 inches (61.8×48.2×161.5 mm)	
Weight (including battery)	201 g	
• Gimbal		
Model	Zenmuse X3	
Weight	221 g	
Output Power (with camera)	Static: 9 W; Dynamic: 11 W	
Angular Vibration Range	±0.03°	
Mount	Detachable	
Controllable Range	Tilt: -35° to +135° Pan: ±320°; Roll: ±30°	
Mechanical Range	Tilt: -90° to +150° Pan: ±330°; Roll: -50° to +90°	
Max. Controllable Speed	120°/s	
• Camera		
Model	X3/FC350H	
Sensor	Sony Exmor R CMOS; 1/2.3" Effective pixels: 12.40 M (Total pixels: 12.76 M)	
Lens	94° FOV 20 mm (35 mm format equivalent) f/2.8	
ISO Range	100–3200 (video); 100–1600 (photo)	
Electronic Shutter Speed	8 s–1/8000 s (up to 30 s when camera is in M mode)	
Max. Image Size	4000×3000 pixels	
Still Photography Modes	Single Shot Photo Burst Mode: 3/5/7 shots Auto Exposure Bracketing (AEB): 3/5 bracketed frames @ 0.7 EV bias Interval Regular Time-lapse Moving Time-lapse Auto Panorama Selfie Panorama	
Video Resolution	UHD: 4K (4096×2160) 24/25p 4K (3840×2160) 24/25/30p 2.7K (2704×1520) 24/25/30p FHD: 1920×1080 24/25/30/48/50/60/120p HD: 1280×720 24/25/30/48/50/60p Auto; Slow Motion	
Video Recording Modes	Auto; Slow Motion	
Max. Video Bitrate	60 Mbps	
Supported File Systems	FAT32 (≤ 32 GB) ; exFAT (> 32 GB)	
Photo Formats	JPEG, DNG	
Video Formats	MP4/MOV (MPEG-4 AVC/H.264)	
Supported SD Cards		Micro SD; Max. Capacity: 64 GB; Class 10 or UHS-1
Operating Temperature		32° to 104° F (0° to 40° C)
Audio Output		Two channel; 48 KHz; AAC
• WiFi Video Link		
Operating Frequency		2.412–2.462 GHz; 5.180–5.805 GHz
Max. Transmission Distance		82 feet (25 m)
Transmitter Power (EIRP)		2.4G: 8 dBm; 5G: 12 dBm
• Intelligent Battery		
Model		HB01-522365
Type		LiPo
Capacity		980 mAh
Energy		10.8 Wh
Voltage		11.1 V
Charging Temperature		59° to 104° F (15° to 40° C)
Operating Temperature		14° to 122° F (-10° to 50° C)
• Battery Charger		
Model		SOY015A–1260120
Input		100–240 V; 50/60 Hz
Output		12.6 V; 1.2 A

Optional Accessories

Extension Rod



Tripod



Bike Mount



Vehicle Mount



Visit the DJI Online Store for more information:
<http://store.dji.com>

OSMO

www.dji.com

1 Install the DJI GO App

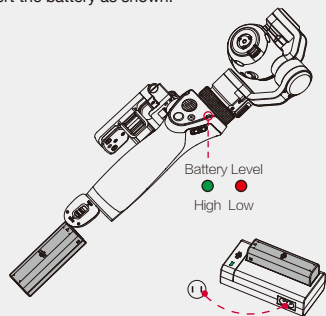
Search for 'DJI GO' on the App Store or Google Play, and install the app on your mobile device.



- DJI GO supports iOS 8.0 (or later) or Android 4.1.2 (or later).

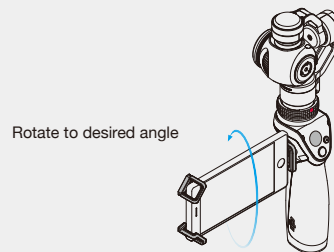
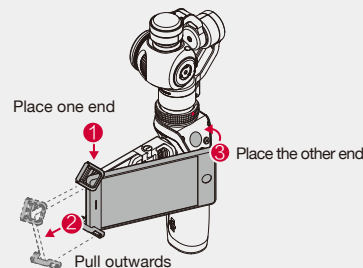
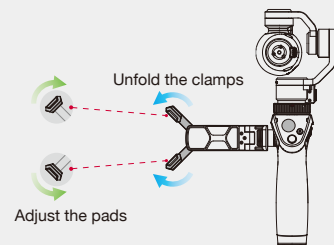
2 Prepare the Battery

Fully charge the battery for the first time to activate. Insert the battery as shown.



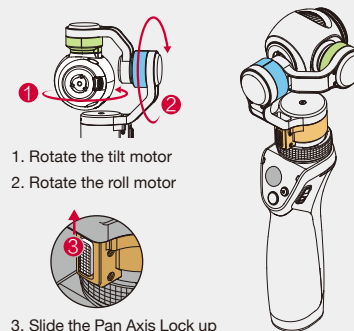
- Charge Time: ~1 hour.
- The LED indicator will glow green when charging is complete.

3 Mount your Mobile Device



- Ensure your mobile device is fully seated.

4 Unlock the Gimbal



- Follow the order above to avoid damaging the camera.
- Rotate the motors just enough to loosen them.

5 Connect to the DJI GO App



To Power On:
Pull down on the switch
Pull down again > Sleep
Pull down and hold for 1.5 s > Power Off



Turn on your mobile's WiFi and connect to **OSMO_XXXXXX**
Default password: 12341234



Launch the app and tap Enter Camera View.



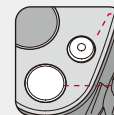
Activate the Osmo if you are using it for the first time. This requires an internet connection.

6 Controls



- Pan or tilt the camera with the joystick.

- Position the camera directly by hand.



- **Record Button**
Press once to start recording, and again to stop recording.
- **Shutter Button**
Press once to take a photo.

- **Trigger**

Hold down to enable Lock Mode.
Tap twice to center the camera.
Tap three times to enter Selfie Mode.



- SmoothTrack Mode is enabled automatically to smooth out jerky movements.
- The Osmo will beep slowly if the gimbal is locked after it is turned on. This means the camera is working normally but the gimbal is shut off.
- If you need to unlock the gimbal after it is turned on, you must rotate the pan motor after unlocking the tilt motor and pan motor to reactivate the gimbal.

For more information, read the User Manual:
www.dji.com/product/osmo

※This Quick Start Guide is subject to change without prior notice.

©2015 DJI. All Rights Reserved.
Designed by DJI. Printed in China